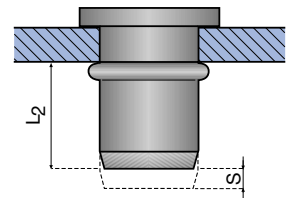
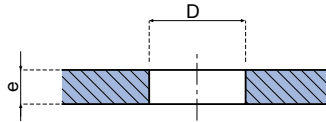
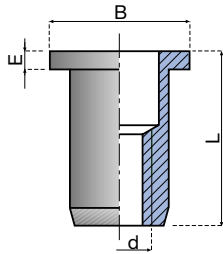


RIVKLE® Stainless steel blind rivet nuts

Round body, plain, flat head

Type 233 08



- high crimping force
- high corrosion resistance
- screw length can be varied
- suitable for use in the food processing industry

d	Thickness e	Hole D ^{+0.1/0}	B	E	S*	L	L ₂ *	B 70 101 Product code
M4	0.80 – 1.75	6	8	1.0	S = 4.5-e	10.0	6.5	2330 804 0175
	1.75 – 2.50	6	8	1.0	S = 5.3-e	10.8	6.5	2330 804 0250
	2.50 – 3.25	6	8	1.0	S = 6-e	11.6	6.5	2330 804 0325
M5	0.80 – 2.00	7	9	1.0	S = 4.8-e	12.6	8.7	2330 805 0200
	2.00 – 3.00	7	9	1.0	S = 5.8-e	13.7	8.7	2330 805 0300
	3.00 – 4.00	7	9	1.0	S = 6.8-e	14.8	8.7	2330 805 0400
M6	0.80 – 1.50	9	11	1.5	S = 5-e	15.0	11.0	2330 806 0150
	1.50 – 3.00	9	11	1.5	S = 6.5-e	16.6	11.0	2330 806 0300
	3.00 – 4.50	9	11	1.5	S = 8-e	18.2	11.0	2330 806 0450
M8	0.80 – 1.50	11	14	1.5	S = 4.8-e	16.4	12.0	2330 808 0150
	1.50 – 3.00	11	14	1.5	S = 6.3-e	18.0	12.0	2330 808 0300
	3.00 – 4.50	11	14	1.5	S = 7.8-e	19.6	12.0	2330 808 0450
M10	1.00 – 3.00	13	16	2.0	S = 5.2-e	22.4	16.0	2330 810 0300
	3.00 – 4.50	13	16	2.0	S = 6.7-e	24.0	16.0	2330 810 0450
	4.50 – 6.00	13	16	2.0	S = 8.2-e	25.6	16.0	2330 810 0600

* Dimensions S and L₂ are indicative values. The difference in length S depends on the material thickness and is used the setting tool stroke.

Dimensions in mm.

Other dimensions and variants can be supplied on request.